

N | Transport

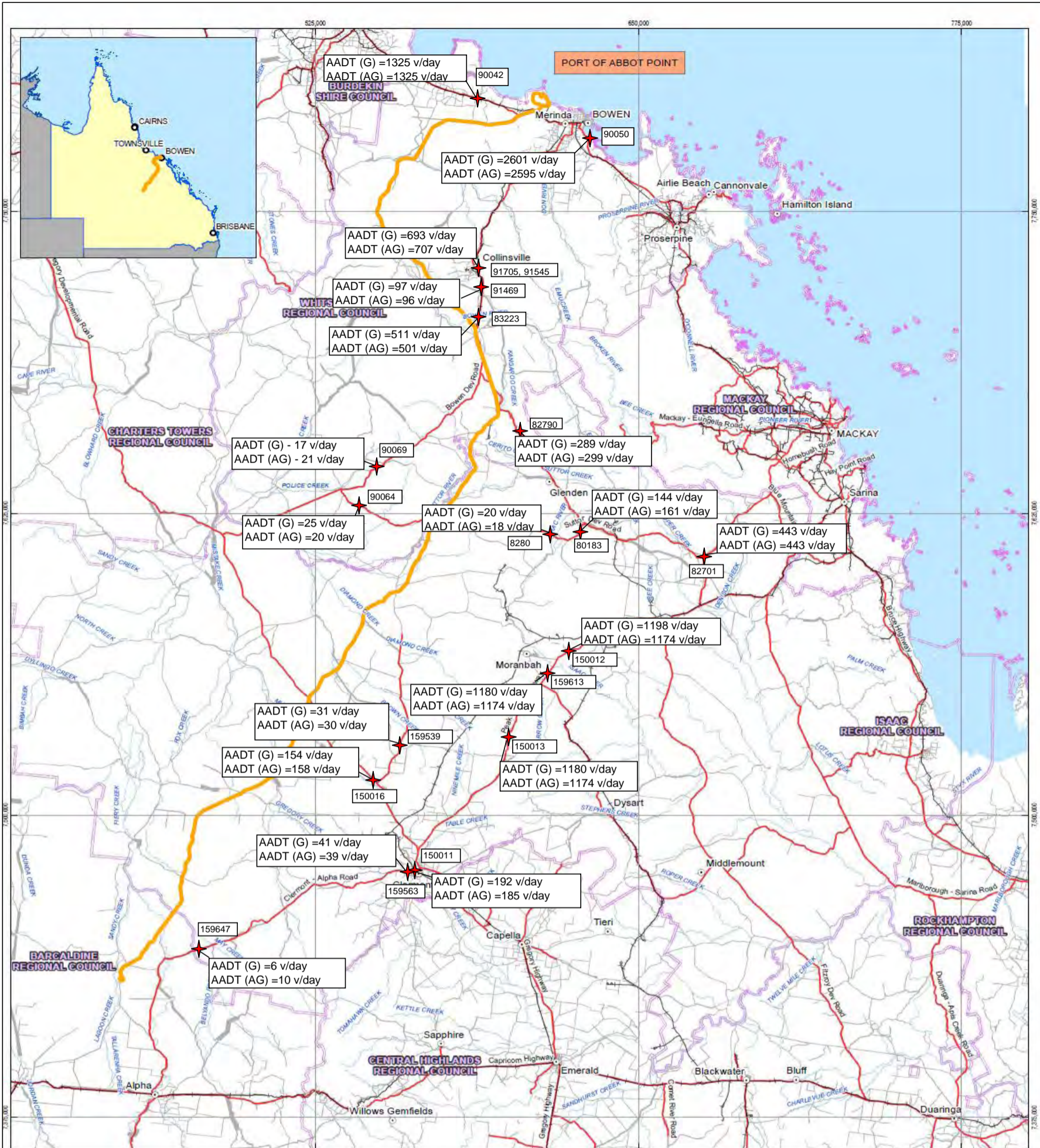




AADT Data for Selected Road Sections

DTMR Count Sites





LEGEND

- Town
- State Road
- Existing Railway
- Local Road
- Watercourse
- Local Government Area
- Proposed Alignment

While every care is taken to ensure the accuracy of this product, the Department of Environment and Resource Management (DERM) makes no representation or warranties about accuracy, reliability, completeness or suitability for any particular purpose and disclaims all responsibility and all liability (including without limitation, liability in negligence) for all expenses, losses, damages (including indirect or consequential damages) and costs which you might incur as a result of the product being inaccurate or incomplete in any way and for any reason. © The State of Queensland, Department of Environment and Resource Management (DERM) 2009.

1:1,400,000 at A3
 0 5 10 20 30 40 50
 Kilometres
 Map Projection: Universal Transverse Mercator
 Horizontal Datum: Geocentric Datum of Australia 1994
 Grid: Map Grid of Australia, Zone 55



HANCOCK PROSPECTING PTY LTD

Hancock Prospecting Pty Ltd
 Alpha Coal Project

Job Number 41-22090
 Revision A
 Date 17 JUNE 2010

AADT Data for Selected Roads

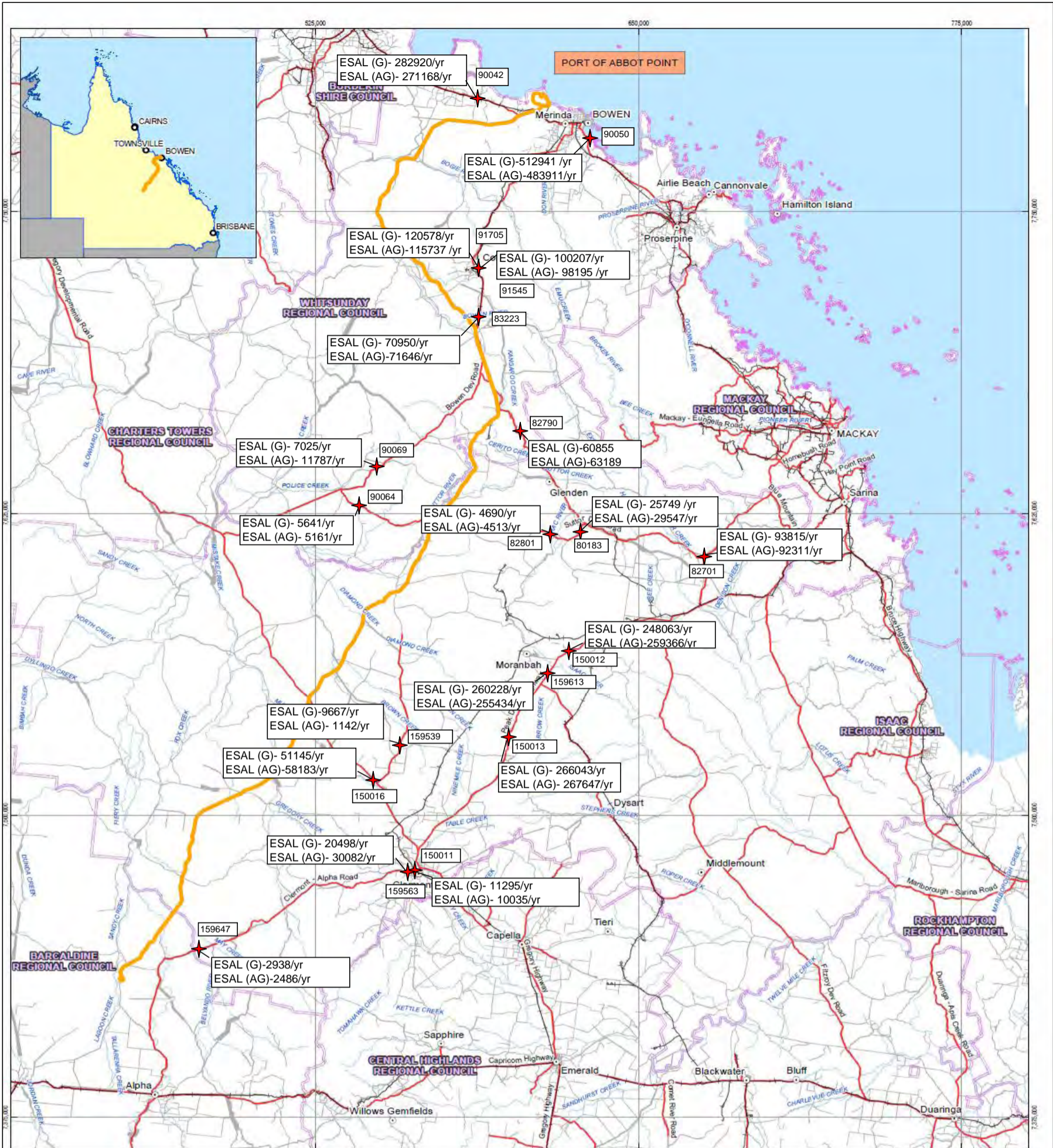
G:\4122090\GID\MAPS\MXD\Miscellaneous\Social Impact Assessment\41-22090_Conceptual Usage Map.mxd
 Copyright: This document is and shall remain the property of GHD. The document may only be used for the purpose for which it was produced. Unauthorised use of this document in any way is prohibited.
 © 2010. While GHD has taken care to ensure the accuracy of this product, GHD, Hancock Prospecting, GA, DMR and DERM make no representations or warranties about its accuracy, completeness or suitability for any particular purpose. GHD, Hancock Prospecting, GA, DMR and DERM cannot accept liability of any kind (whether in contract, tort or otherwise) for any expenses, losses, damages and/or costs (including indirect or consequential damages) which are or may be incurred as a result of the product being inaccurate, incomplete or unsuitable in any way and for any reason.
 Data source: Landsat (2008); LGA (2009) - DERM; Proposed Rail Alignment v8 (2010) - Hancock Prospecting Pty Ltd.; Rail, Watercourses, Waterbody, Localities, 250K Topography - ©Commonwealth of Australia (Geoscience Australia) 2007; State Controlled Roads © the State of Queensland through the Department of Main Roads 2010; Created by: EA



Calculated ESALS for Selected Road Sections

DTMR Count Sites





LEGEND

- ⊙ Town
- Existing Railway
- State Road
- Local Road
- Watercourse
- Local Government Area
- Proposed Alignment

While every care is taken to ensure the accuracy of this product, the Department of Environment and Resource Management (DERM) makes no representations or warranties about accuracy, reliability, completeness or suitability for any particular purpose and disclaims all responsibility and all liability (including without limitation, liability in negligence) for all expenses, losses, damages (including indirect or consequential damages) and costs which you might incur as a result of the product being inaccurate or incomplete in any way and for any reason. © The State of Queensland, Department of Environment and Resource Management (DERM) 2009.

1:1,400,000 at A3
 0 5 10 20 30 40 50
 Kilometres
 Map Projection: Universal Transverse Mercator
 Horizontal Datum: Geocentric Datum of Australia 1994
 Grid: Map Grid of Australia, Zone 55



HANCOCK PROSPECTING PTY LTD

Hancock Prospecting Pty Ltd
 Alpha Coal Project

Job Number 41-22090
 Revision A
 Date 17 JUNE 2010

ESAL DTMR Counts

G:\4122090\GID\MAPS\MXD\Miscellaneous\Social Impact Assessment\41-22090_Conceptual Usage Map.mxd
 Copyright: This document is and shall remain the property of GHD. The document may only be used for the purpose for which it was produced. Unauthorised use of this document in any way is prohibited.
 © 2010. While GHD has taken care to ensure the accuracy of this product, GHD, Hancock Prospecting, GA, DMR and DERM make no representations or warranties about its accuracy, completeness or suitability for any particular purpose. GHD, Hancock Prospecting, GA, DMR and DERM cannot accept liability of any kind (whether in contract, tort or otherwise) for any expenses, losses, damages and/or costs (including indirect or consequential damages) which are or may be incurred as a result of the product being inaccurate, incomplete or unsuitable in any way and for any reason.
 Data source: Landsat (2008); LGA (2009) - DERM; Proposed Rail Alignment v8 (2010) - Hancock Prospecting Pty Ltd.; Rail, Watercourses, Waterbody, Localities, 250K Topography - ©Commonwealth of Australia (Geoscience Australia) 2007; State Controlled Roads © the State of Queensland through the Department of Main Roads 2010; Created by: EA

